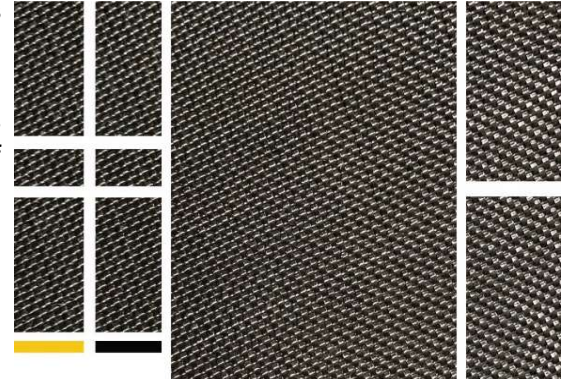


# WOVEN GEOTEXTILE

## M - 404



SKAPS woven geotextile fabrics are woven polypropylene materials offering optimum performance when used in reinforcement, stabilization and drainage applications. Produced from first quality raw materials, they provide the perfect balance of strength and separation in styles capable of functioning exceptionally well in a wide range of performance requirements. SKAPS M404 resists ultraviolet resistance, rotting, biological degradation and it is chemically inert to any natural bases or acids.



Unless indicated below, all listed properties are Minimum Average Roll Values:

Property	Method	English (MARV <sup>2</sup> )	Metric (MARV <sup>2</sup> )
Grab Tensile	ASTM D 4632	365 x 200 lbs	1.62 x 0.89 kN
Grab Elongation	ASTM D 4632	15%	15%
Trapezoidal Tear	ASTM D 4533	115 x 75 lbs	0.51 x 0.33 kN
CBR Puncture Resistance	ASTM D 6241	675 lbs	3.00 kN
Water Flow <sup>3</sup>	ASTM D 4491	145 gpm/sf	5907 l/min/sm
Permittivity <sup>3</sup>	ASTM D 4491	2.1 Sec <sup>-1</sup>	2.1 Sec <sup>-1</sup>
AOS <sup>3</sup>	ASTM D 4751	40 US Sieve	0.425 mm
UV Resistance	ASTM D 4355	90/500 %/hrs	90/500 %/hrs

### Packaging

Roll Dimensions (W x L)	12 x 300 ft.	3.66 m x 91 m
Area Per Roll	400 sq. yards	346 sq. meters

### Note

1. The property values listed above are subject to change without notice.
2. Minimum Average Roll Values (MARV) is calculated as the average minus two standard deviations. Statistically, it yields approximately 97.5% degree of confidence that any samples taken from quality assurance testing will meet or exceed the values described above.
3. At time of manufacturing. Handling may change these properties.

*This information is provided for reference purposes only and is not intended as a warranty or guarantee. SKAPS assumes no liability in connection with the use of this information.*